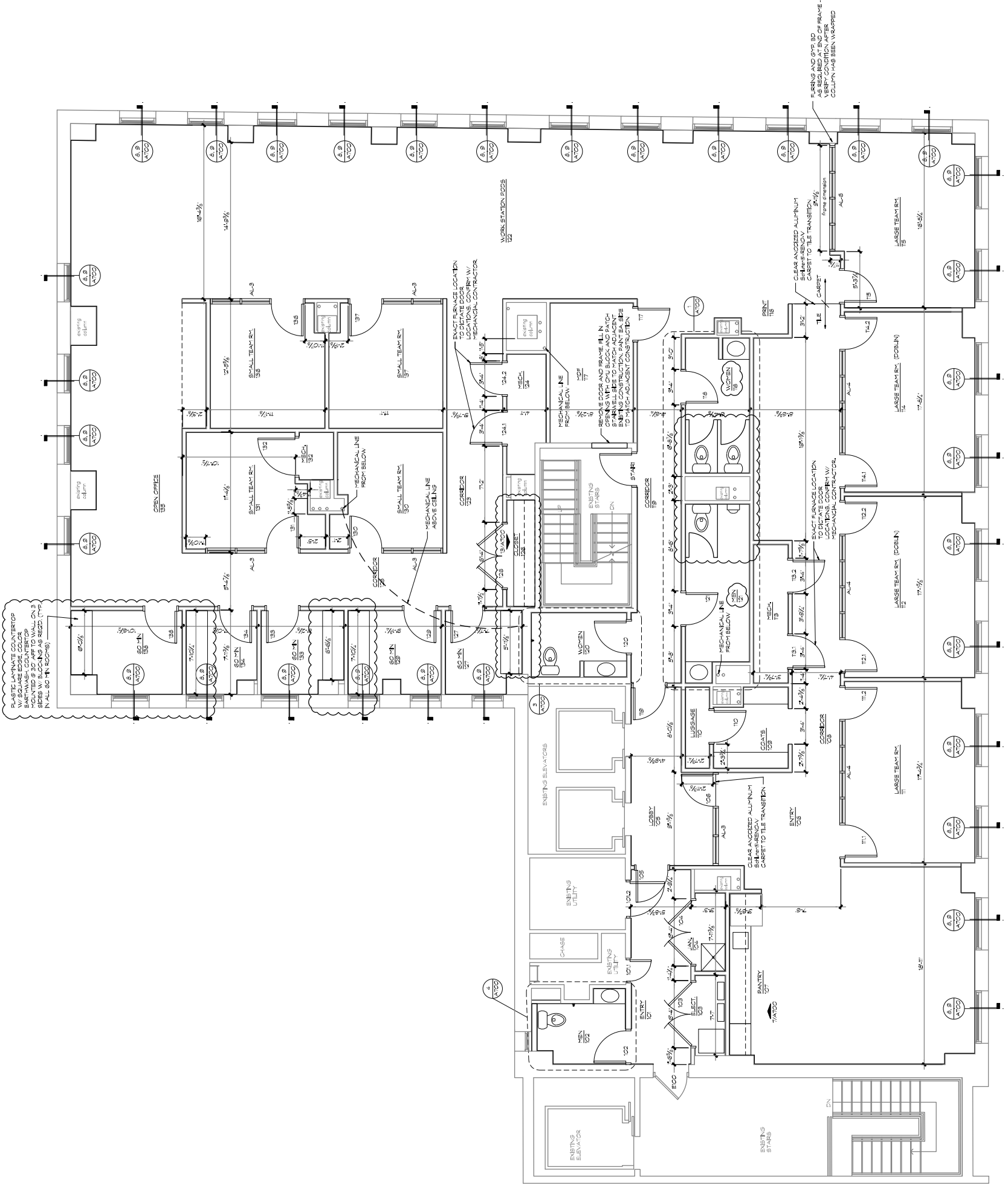


- NOTES:
1. AT LOCATIONS OF PRIOR PARTITIONS, FINISH MATERIALS SHALL BE REMOVED TO EXPOSE STABLE FINISH SURFACE FOR NEW PARTITIONS. FINISH MATERIALS TO BE REMOVED ARE SHOWN IN RED AND DO NOT FILE.
  2. ALL EXISTING WALLS TO RECEIVE NEW 1/2 GYP BO TO BE DIRECTLY ADHERED TO. FINISH MATERIALS TO BE REMOVED SHALL BE INSTALLED OVER FINISH CHANNELS & WOOD BLOCKING AS REQD.
  3. AT EXISTING COLUMN LOCATIONS ENCLOSE WITH STUDS AND GYP BO TO BE DIRECTLY ADHERED TO. WHERE POSSIBLE, OTHERWISE INSTALL NEW 1/2 GYP BO AND WOOD BLOCKING AS REQD.



1 9th FLOOR PLAN  
1/4" = 1'-0"

